



Taconite Worker Health Studies Update

University of Minnesota
Lung Health Partnership

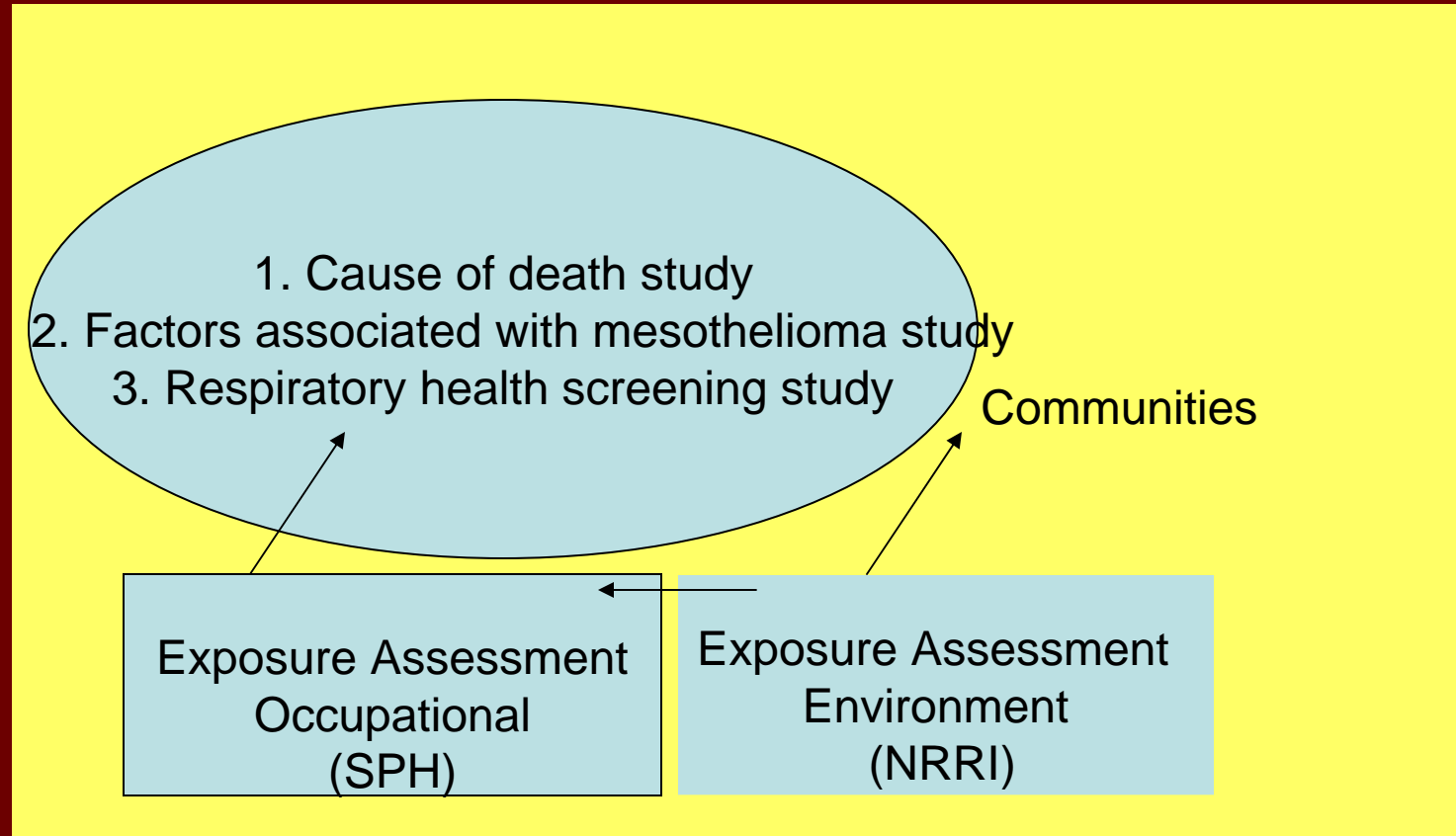
School of Public Health
(Division of Environmental Health Sciences)
Medical School
Natural Resources Research Institute



Questions to Address in Health Studies

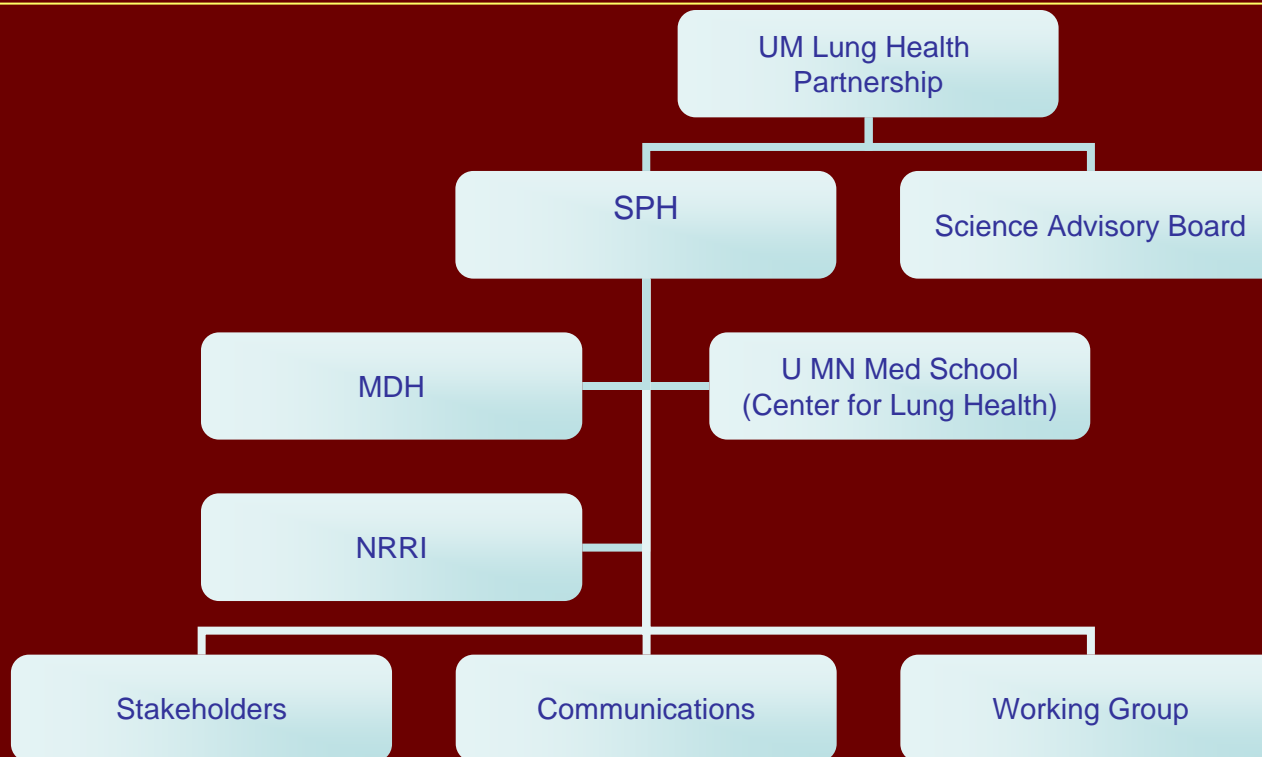
- What is the relationship of working in the mining industry to the mesothelioma cases?
- Are other diseases occurring as a result of working in this industry?
- Are spouses at risk for diseases?

Design of Work Scope





Administrative Chart





Accomplishments to Date

- Draft proposal developed for all 4 parts
- Exposure assessment mid-way:
 - MSHA data base reviewed
 - Dust composition underway
 - Environmental measures being finalized



Accomplishments to Date

- Meetings with union, retirees, industry underway
- Tours of mining facilities
- Seminars with professional communities
- Website running
- 800 number/nurse line
- Science Panel input provided



External Science Advisory Board

- Harvey Checkoway, PhD; University of Washington, Seattle
- Karl Kelsey, MD, PhD; Harvard University
- James Merchant, MD, PhD; University of Iowa
- Carol Rice, PhD; University of Cincinnati